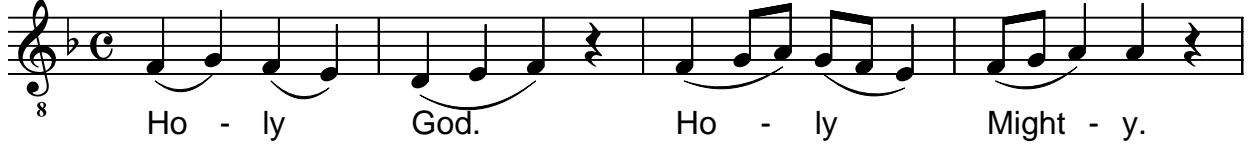


Holy God. Mode 1. Pa=D.

Diatonic

D



A

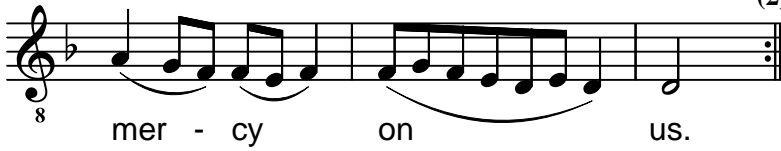
D

G

D

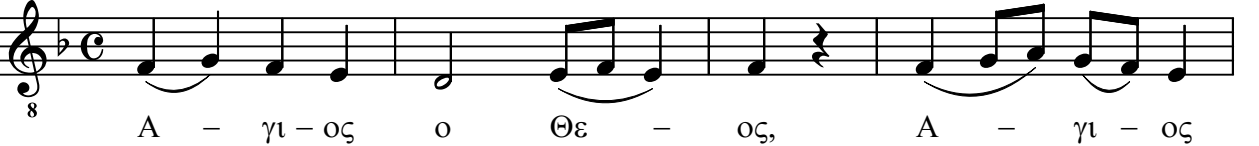


(2)



Diatonic

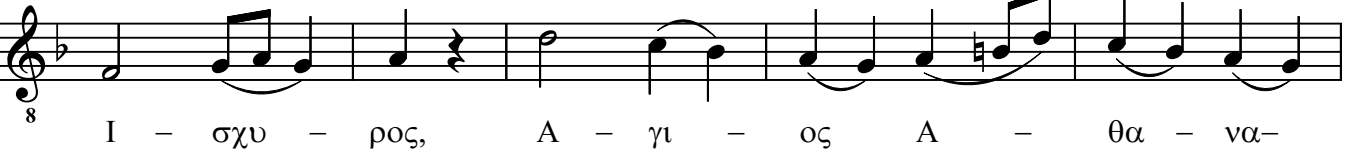
D



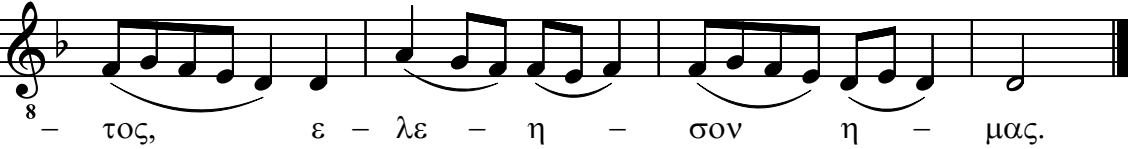
A

D

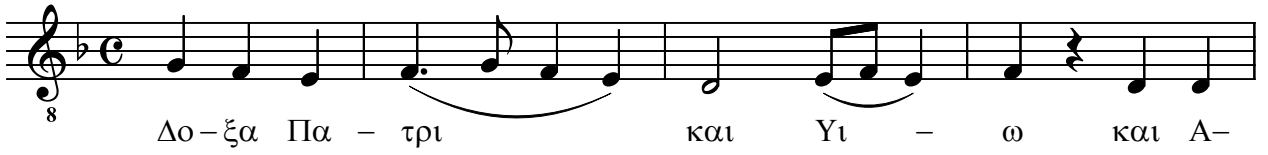
G



D



D



8 Δο-ξα Πα - τρι και Υι - ω και Α-

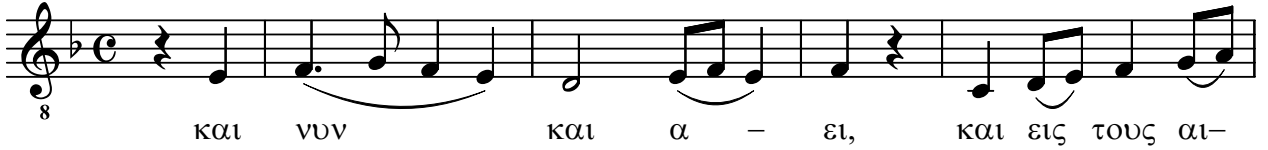


8 - γι - ω Πνευ - μα - τι,

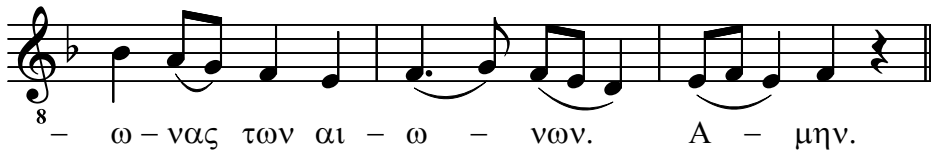
D

C

D



8 και νυν και α - ει, και εις τους αι-



8 - ω - νας των αι - ω - νων. Α - μην.

A

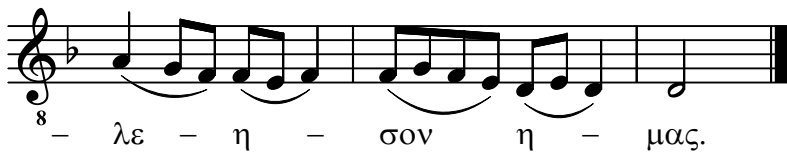
D

G

D

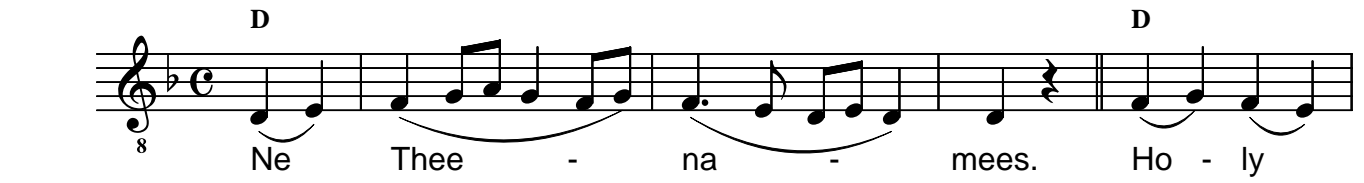


8 Α - γι - ος Α - θα - να - τος, ε-



8 - λε - η - σον η - μας.

D D



8 Ne Thee - na - mees. Ho - ly



8 God. Ho - ly Might - y. Ho - ly Im-

G D



8 - mor - tal, have mer - cy on

C D



8 us."