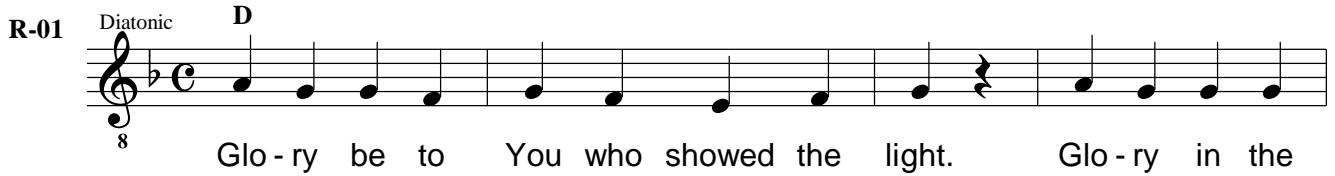


# Great Doxology.

Mode 1. *Pa=D.*

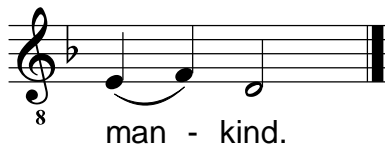
R-01 Diatonic D



8 Glo - ry be to You who showed the light. Glo - ry in the



8 high - est to God. His peace is on earth, His good pleas-ure in



8 man - kind.

L-02 D



8 We praise You, we bless You, we wor-ship You, we



8 glo - ri - fy You, we give thanks to You for Your great glo - ry.

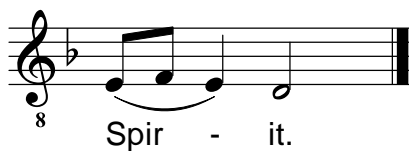
R-03 D



8 Lord King, heav - en - ly God, Fa - ther, Rul - er o - ver all;



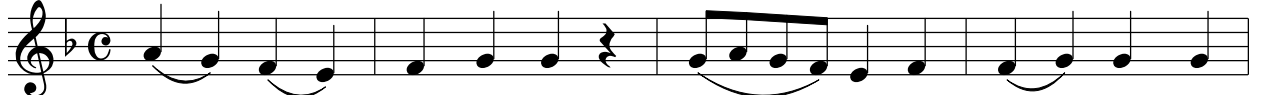
8 Lord, on - ly - be - got - ten Son, Je - sus Christ; and You, O Ho - ly



8 Spir - it.

L-04

D



Lord God, Lamb of God, Son of the Fa - ther, who

G

D



take a-way the sin of the world, have mer - cy on us, You who



take a-way the sins of the world.

R-05

D

G



Ac - cept our sup-pli - ca-tion, You who sit at the right hand of the

D



Fa - ther, and have mer - cy on us.

L-06

D

G



For You a-lone are ho - ly, You a-lone are Lord, Je-

D



- sus Christ, to the glo - ry of God the Fa - ther. A - men.

R-07

D



Ev-ery day I will bless You, and Your name will I praise




to e - ter - ni - ty, and to the a - ges of a - ges.

L-08 G D



8 Vouch - safe, O Lord, this day, that we be kept with-out

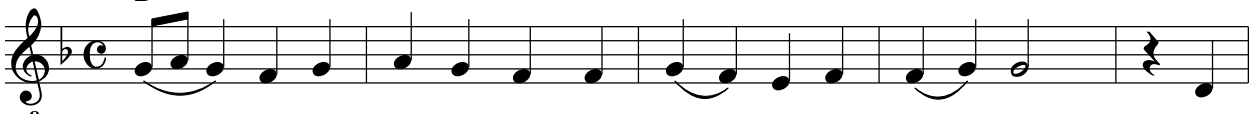
Detailed description: This block contains the first line of music. It starts with a treble clef, a key signature of one flat (B-flat), and a common time signature (C). The melody begins with a quarter rest, followed by a half note G4, a quarter note A4, a quarter note Bb4, a quarter note C5, a quarter note Bb4, a quarter note A4, a quarter note G4, and a quarter note F4. A fermata is placed over the G4 note. The lyrics "Vouch - safe, O Lord, this day," are written below the notes. The music continues with a quarter note E4, a quarter note D4, a quarter note C4, a quarter note B3, a quarter note A3, a quarter note G3, and a quarter note F3. A fermata is placed over the F3 note. The lyrics "that we be kept with-out" are written below the notes. Above the staff, the chord letters "G" and "D" are placed above the first and fifth measures respectively.



8 sin.

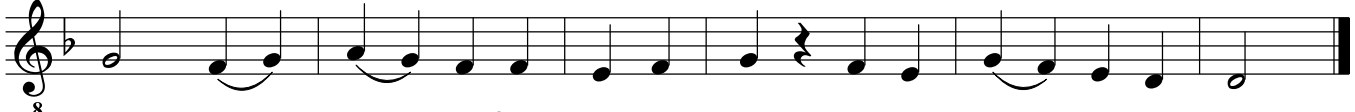
Detailed description: This block contains the continuation of the first line of music. It starts with a treble clef, a key signature of one flat, and a common time signature. The melody begins with a quarter note E4, a quarter note D4, a quarter note C4, and a quarter note B3. A fermata is placed over the B3 note. The lyrics "sin." are written below the notes. The staff ends with a double bar line.

R-09 D



8 Bless - ed are You, O Lord, the God of our fa - thers, and

Detailed description: This block contains the second line of music. It starts with a treble clef, a key signature of one flat, and a common time signature. The melody begins with a quarter note G4, a quarter note A4, a quarter note Bb4, a quarter note C5, a quarter note Bb4, a quarter note A4, a quarter note G4, a quarter note F4, a quarter note E4, a quarter note D4, a quarter note C4, a quarter note B3, a quarter note A3, a quarter note G3, and a quarter note F3. A fermata is placed over the F3 note. The lyrics "Bless - ed are You, O Lord, the God of our fa - thers, and" are written below the notes. Above the staff, the chord letter "D" is placed above the first measure.



8 praised and glo - ri-fied is Your name to the a - ges. A - men.


Detailed description: This block contains the continuation of the second line of music. It starts with a treble clef, a key signature of one flat, and a common time signature. The melody begins with a quarter note E4, a quarter note D4, a quarter note C4, a quarter note B3, a quarter note A3, a quarter note G3, a quarter note F3, a quarter note E3, a quarter note D3, a quarter note C3, a quarter note B2, a quarter note A2, a quarter note G2, and a quarter note F2. A fermata is placed over the F2 note. The lyrics "praised and glo - ri-fied is Your name to the a - ges. A - men." are written below the notes. The staff ends with a double bar line.

L-10 D



8 Let Your mer-cy be on us, O Lord, as we have set our

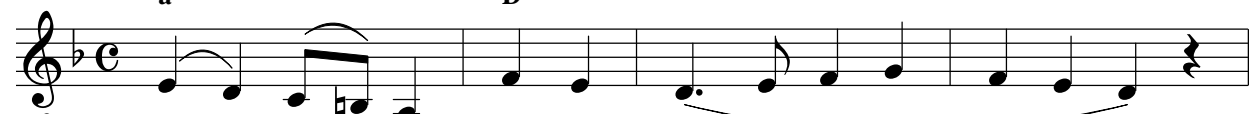
Detailed description: This block contains the third line of music. It starts with a treble clef, a key signature of one flat, and a common time signature. The melody begins with a quarter note G4, a quarter note A4, a quarter note Bb4, a quarter note C5, a quarter note Bb4, a quarter note A4, a quarter note G4, a quarter note F4, a quarter note E4, a quarter note D4, a quarter note C4, a quarter note B3, a quarter note A3, a quarter note G3, and a quarter note F3. A fermata is placed over the F3 note. The lyrics "Let Your mer-cy be on us, O Lord, as we have set our" are written below the notes. Above the staff, the chord letter "D" is placed above the first measure.



8 hope on You.

Detailed description: This block contains the continuation of the third line of music. It starts with a treble clef, a key signature of one flat, and a common time signature. The melody begins with a quarter note E4, a quarter note D4, a quarter note C4, a quarter note B3, a quarter note A3, a quarter note G3, a quarter note F3, a quarter note E3, a quarter note D3, a quarter note C3, a quarter note B2, a quarter note A2, a quarter note G2, and a quarter note F2. A fermata is placed over the F2 note. The lyrics "hope on You." are written below the notes. The staff ends with a double bar line.

R-11 a D



8 Bless - ed are You, O Lord.

Detailed description: This block contains the fourth line of music. It starts with a treble clef, a key signature of one flat, and a common time signature. The melody begins with a quarter note G4, a quarter note A4, a quarter note Bb4, a quarter note C5, a quarter note Bb4, a quarter note A4, a quarter note G4, a quarter note F4, a quarter note E4, a quarter note D4, a quarter note C4, a quarter note B3, a quarter note A3, a quarter note G3, a quarter note F3, a quarter note E3, a quarter note D3, a quarter note C3, a quarter note B2, a quarter note A2, a quarter note G2, and a quarter note F2. A fermata is placed over the F2 note. The lyrics "Bless - ed are You, O Lord." are written below the notes. Above the staff, the chord letters "a" and "D" are placed above the first and fifth measures respectively.



8 Teach me Your stat - utes.

Detailed description: This block contains the continuation of the fourth line of music. It starts with a treble clef, a key signature of one flat, and a common time signature. The melody begins with a quarter note E4, a quarter note D4, a quarter note C4, a quarter note B3, a quarter note A3, a quarter note G3, a quarter note F3, a quarter note E3, a quarter note D3, a quarter note C3, a quarter note B2, a quarter note A2, a quarter note G2, and a quarter note F2. A fermata is placed over the F2 note. The lyrics "Teach me Your stat - utes." are written below the notes. The staff ends with a double bar line.

L-12 a D  
8 Bless - ed are You, O Lord.

8 Teach me Your stat - utes.

R-13 a D  
8 Bless - ed are You, O Lord.

8 Teach me Your stat - utes.

L-14 D  
8 Lord, You have been our ref - uge from gen - er - a - tion to

8 gen - er - a - tion. I said: Lord, have mer - cy on me.

8 Heal my soul, for I have sinned a - gainst You.

R-15 D  
8 Lord, I have fled to You. Teach me to do Your will, for

8 You are my God.

L-16 **D**

8 For with You is the foun - tain of life; in Your light we shall

8 see light.

R-17 **D**

8 Con - tin - ue Your mer - cy to those who know You.

**D**

8 Ho - ly God, Ho - ly Might - y,

8 Ho - ly Im - mor - tal, have mer - cy on us.

L-18 **D**

8 Ho - ly God, Ho - ly Might - y,

8 Ho - ly Im - mor - tal, have mer - cy on us.

R-19 **D**

8 Ho - ly God, Ho - ly Might - y,

8 Ho - ly Im - mor - tal, have mer - cy on us.

L-20 <sup>D</sup>  
8  
Glo-ry to the Fa-ther and the Son and the Ho-ly Spir - it.

R-21 <sup>D</sup>  
8  
Both now and ev - er and to the a - ges of

8  
a - ges. A - men.

L-22  
8  
Ho - ly Im - mor - tal, have mer - cy on us.

**Slow (Asmatikon) Melody**

R-23 <sup>D</sup>  
8  
Ho - ly God,

L-24 <sup>D</sup>  
8  
Ho - ly Might - y,

R-25 <sup>D</sup> <sup>G</sup> <sup>D</sup>  
8  
Ho - ly Im - mor - tal, have

8  
mer - cy on us. <sup>C</sup> <sup>D</sup>