

### Lauds 3. Mode 4. *Vu=E. When you were called.*

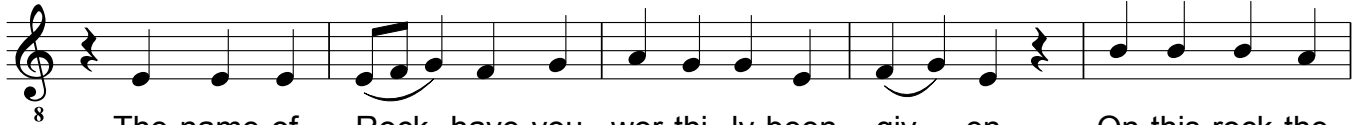
Diatonic

E



8 Praise Him with the sound of trumpet; praise Him with the harp and lyre.

E



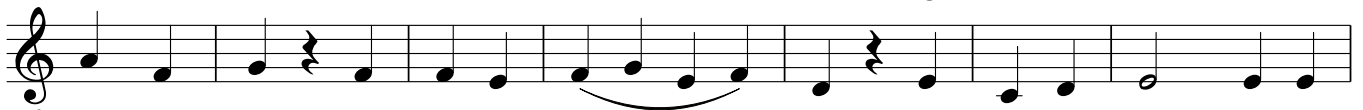
8 The name of Rock have you wor-thi-ly been giv - en. On this rock the

D



8 Lord of all con - firmed the Church-'s faith, which is un - sha - ken; and

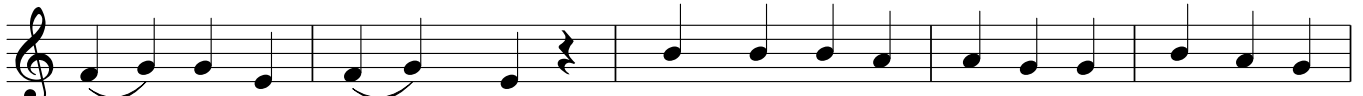
C



8 He made you, O ho-ly Pe - ter, the sen-ior pas - tor of

D

E



8 rea - son-en - dowed sheep. There-fore the be - nev-o-lent Mas-ter ap-

D



- 8 point-ed you to hold the keys of the heav'n-ly gates, and thus to

C

D

E



8 o - pen to ev-ery per - son ap - proach-ing them with faith.

D

C

D

E



8 And you were there - fore count-ed wor-thy of im - i - tat - ing your

**D** **G**



<sup>8</sup> Lord, be - ing cru - ci - fied. We en - treat you to pray

Detailed description: A single musical staff in treble clef. The first measure contains a whole note G4. The second measure contains a quarter note G4, a quarter note A4, and a quarter note B4, all beamed together. The third measure contains a quarter note C5, a quarter note B4, and a quarter note A4, all beamed together. The fourth measure contains a quarter note G4, a quarter note F4, and a quarter note E4, all beamed together. The fifth measure contains a quarter note D4, a quarter note C4, and a quarter note B3, all beamed together. The sixth measure contains a quarter note A3, a quarter note G3, and a quarter note F3, all beamed together. The seventh measure contains a quarter note E3, a quarter note D3, and a quarter note C3, all beamed together. The eighth measure contains a quarter note B2, a quarter note A2, and a quarter note G2, all beamed together. A fermata is placed over the eighth measure. Above the staff, the letter 'D' is positioned above the first measure, and the letter 'G' is positioned above the fourth measure.

**D** **E**



<sup>8</sup> Him to il - lu - mine us and save our souls.

Detailed description: A single musical staff in treble clef. The first measure contains a quarter note G4, a quarter note A4, and a quarter note B4, all beamed together. The second measure contains a quarter note C5, a quarter note B4, and a quarter note A4, all beamed together. The third measure contains a quarter note G4, a quarter note F4, and a quarter note E4, all beamed together. The fourth measure contains a quarter note D4, a quarter note C4, and a quarter note B3, all beamed together. The fifth measure contains a quarter note A3, a quarter note G3, and a quarter note F3, all beamed together. The sixth measure contains a quarter note E3, a quarter note D3, and a quarter note C3, all beamed together. The seventh measure contains a quarter note B2, a quarter note A2, and a quarter note G2, all beamed together. The eighth measure contains a quarter note F2, a quarter note E2, and a quarter note D2, all beamed together. The staff ends with a double bar line. Above the staff, the letter 'D' is positioned above the first measure, and the letter 'E' is positioned above the fourth measure.