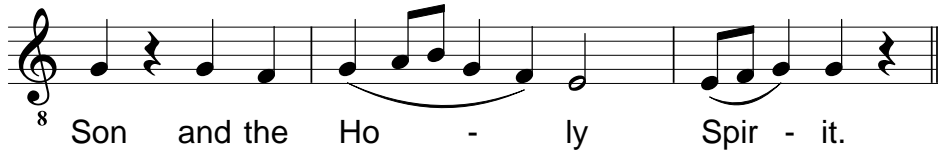
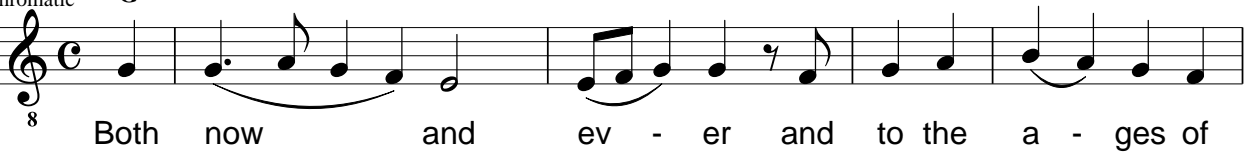


1st Theotokion. Mode 2. *Di=G.*

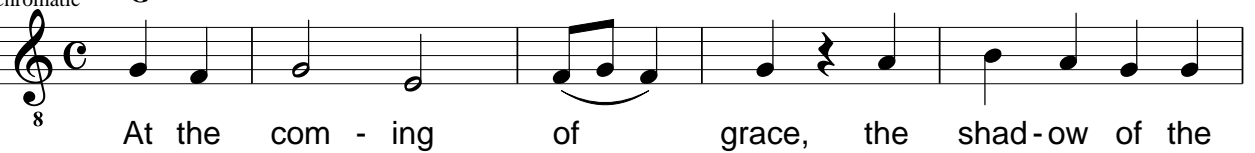
Soft Chromatic G

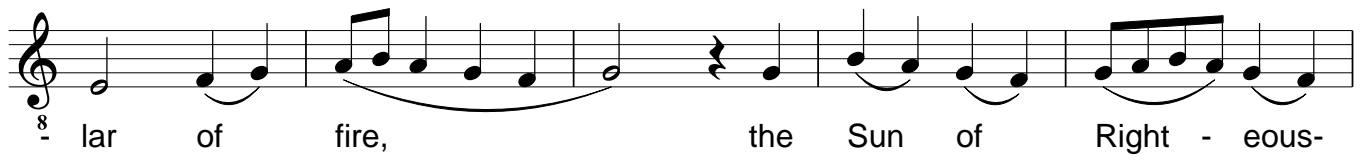


Soft Chromatic G

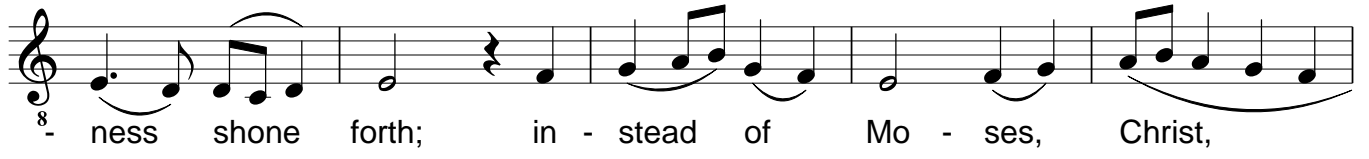


Soft Chromatic G

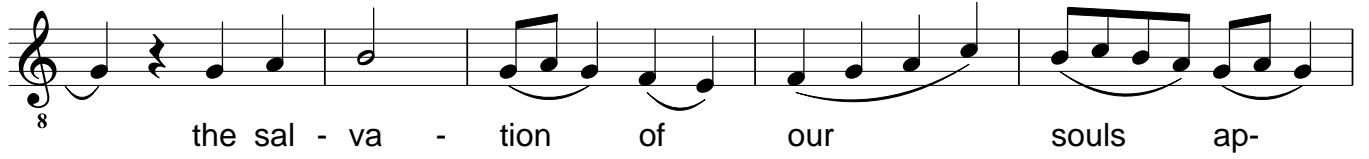




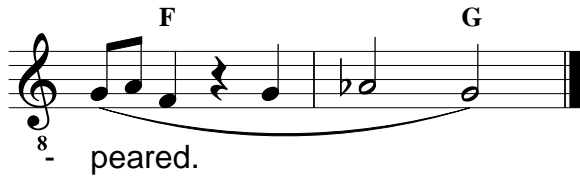
8 - lar of fire, the Sun of Right - eous-



8 - ness shone forth; in - stead of Mo - ses, Christ,



8 the sal - va - tion of our souls ap-



8 - peared.

F G