

Both now. **Theotokion. Mode pl. 1. Ke=A. Let us worship.**

Diatonic

A



O im - pass-a - ble gate - way of God the Lord, re - joice! Wall and



shel - ter of those who in you take re - fuge, re - joice! Storm - less



ha - ven, re - joice, O Maid who knew not man, and yet phys - i - c'ly gave



birth to your Cre - a - tor and God. Nev - er cease in - ter - ced - ing,



on be - half of those ex - toll - ing and wor - ship - ing the Son you



bore.

**Final Ending**



wor - ship - ing the Son you bore.

Both now. **Theotokion. Mode pl. 1. Ke=F. Let us worship.**

Diatonic

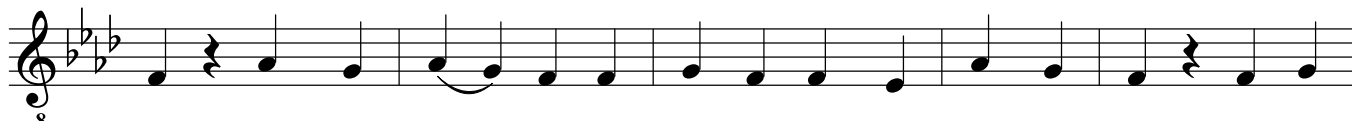
F



O im - pass - a - ble gate - way of God the Lord, re-



- joice! Wall and shel-ter of those who in you take re - fuge, re-



- joice! Storm-less ha - ven, re - joice, O Maid who knew not man, and yet



phys-i - c'ly gave birth to your Cre - a - tor and God. Nev-er cease in-ter-

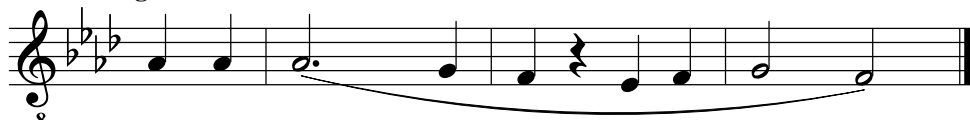


- ced - ing, on be - half of those ex - toll - ing and wor-ship - ing the



Son you bore.

**Final Ending**



Son you bore.

Both now. **Theotokion. Mode pl. 1. Ke=G.** *Let us worship.*

Diatonic

G

O im - pass - a - ble gate - way of God the Lord, re - joice! Wall and

shel - ter of those who in you take re - fuge, re - joice! Storm - less

ha - ven, re - joice, O Maid who knew not man, and yet phys - i - c'ly gave

birth to your Cre - a - tor and God. Nev - er cease in - ter - ced - ing,

on be - half of those ex - toll - ing and wor - ship - ing the Son you

bore.

**Final Ending**

Son you bore.