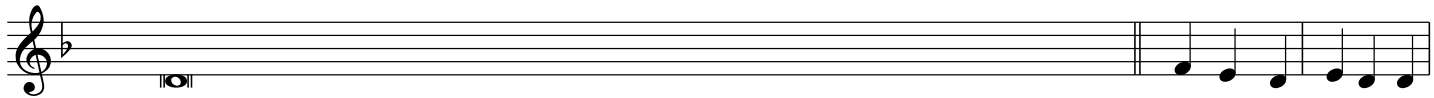


AINOI - RESURRECTIONAL STICHERON 6



6. Αινεῖτε αὐτὸν ἐν κυμβάλοις εὐήχοις, αἰνεῖτε αὐτὸν ἐν κυμβάλοις ἀλαλαγμοῦ. Πᾶ-σα πνο - ἡ αἰ-νε-
Enite afton en kimvalis efichis, enite afton en kimvalis alalaghmou. Pa-sa pno - i e-ne



- σά-τω τὸν Κύ - ρι - ον. Ὁ-δυ - ρό-με - ναι με-τὰ σπου-δῆς, τὸ
- sa-to ton Ky - ri - on. O-dhi - ro-me - ne me-ta-spu-dhis, to



μνή-μά σου κα - τέ-λα - βον αἰ τί - μι - αι Γυ - ναῖ - κες, εὐ-ροῦ-σαι δὲ τὸν
mni-ma sou ka - te-la - von e ti - mi - e Ghi - ne - kes, ev-rou-se dhi ton



τά-φον ἄ - νε-ωγ - μέ - νον, καὶ μα-θοῦ-σαι πα - ρὰ τοῦ Ἁγ - γέ-λου, τὸ και-νὸν καὶ πα - ρά-δο-
ta-fon a - ne-ogh - me - non, ke ma-thou-se pa - ra-tou An - ge-lou, to ke-non ke pa - ra-dho-



- ξον θαῦ-μα, ἄ - πῆγ - γει - λαν τοῖς Ἀ-πο - στό - λοις, ὅ-τι ἄ - νέ-στη ὁ
- xon thav-ma, a - pin - gi - lan tis A-po - sto - lis, o-ti a - ne-sti o



Κύ-ρι - ος, δω - ρού-με-νος τῷ κό-σμῳ τὸ μέ-γα ἔ - λε - ος.
Ki-ri - os, dho - rou-me-nos to ko-smo to me-ga e - le - os.