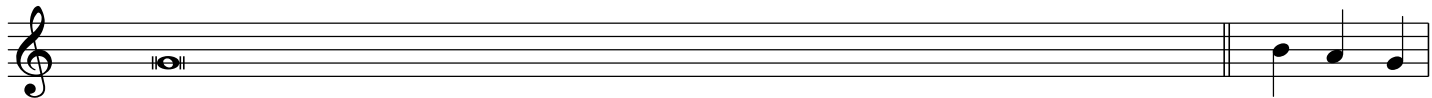


AINOI - RESURRECTIONAL STICHERON 6



6. Αίνεῖτε αὐτὸν ἐν κυμβάλοις εὐήχοις, αἰνεῖτε αὐτὸν ἐν κυμβάλοις ἀλαλαγμοῦ. Πᾱ-σα πνο-
 Enite afton en kimvalis evichis, enite afton en kimvalis alalagmu. Pa-sa pno-



- ἡ αἰ-νε - σά - τω τὸν Κύ - ρι - ον. Αἰ-νε - σά-τω-σαν ἔ-θνη καὶ λα-
 - i e-ne - sa - to ton Ky - ri - on. Ei-ne - sa-to-san e--thni ke la-



- οὐ Χρι - στὸν τὸν Θε - ὄν ἡ - μῶν, τὸν ἐκ-ου - σί-ως δι' ἡ - μᾶς σταυ-
 - i-Chri - ston ton The - on i - mon, ton k-ou - si-os dhi' i - mas stav-



- ρὸν ὑ-πο - μεί - ναν - τα, καὶ ἐν τῷ ἄ-δη τρι-η-με - ρεύ - σαν - τα,
 - ron i-po - mi - nan - da, ke en to a-dhi tri-i-me - ref - san - da,



καὶ προ-σκυ-νη - σά-τω-σαν αὐ - τοῦ τὴν ἐκ νε - κρῶν Ἄ - νά - στα-
 ke pro-ski - ni - sa-to-san af - tou tin ek ne - kron A - na - sta-



- σιν, δι' ἧς, πε - φώ - τι - σται πάν-τα τοῦ κό-σμου τὰ πέ - ρα - τα.
 - sin, dhi' is, pe - fo - ti - ste pan-da tou ko-smou ta pe - ra - ta.